

# FOR SALE

## RESIDENTIAL - CONDOMINIUM 592SQFT (55SQM) / CALL FOR PRICE!

+65 9272 2788



SEASIDE  
RESIDENCES

Huttons®  
The Agency of Choice

OPEN FOR SALE



1 - Bedroom + Study Suites

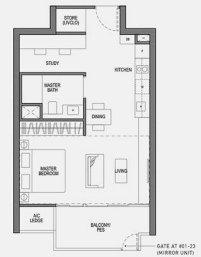
TYPE AS1

55 SQM / 592 SQFT

#21-10 TO #25-10

#01-23 TO #05-23 (MIRROR UNIT)

#05-30 TO #25-30



DATE AT #01-23  
(MIRROR UNIT)

### RESIDENTIAL - CONDOMINIUM

10, SIGLAP LINK, EAST COAST, MARINE PARADE,  
SINGAPORE 448869

- LISTING ID: SGLD36080668
- TENURE: LEASEHOLD 99
- TITLE: N/A
- SIZE BUILT-UP: 592SQFT (55SQM)
- SIZE LAND: 4.771AC (1.931HA)
- NO. OF FLOORS: 27
- FLOOR/LEVEL: N/A - MIDDLE FLOOR
- BED ROOMS: 1+2
- BATH ROOMS: 1
- MAIDS ROOMS: N/A
- PARKING SPACES: N/A
- LAYOUT TYPE: INTERMEDIATE
- FACING: N/A
- VIEWING: N/A
- SELLING PRICE: **CALL FOR PRICE!**
- COMPLETION YEAR: 2021
- CONDITION: N/A
- FURNISHING: N/A
- LISTING DATE: JUN 25, 2019

### SEASIDE RESIDENCES

1 bedroom, 1 bathroom Condominium for Sale. Completed in 2021, this middle floor intermediate unit. Others: Leasehold 99 Located in Singapore's district D15 near East Coast, Marine Parade in the area East Coast (Central region).

### EXTERIOR FACILITIES

- 24 Hours Security
- Covered Car Park
- Game Room
- Landscaped Garden

VISIT THIS PROPERTY AT: <https://www.valeriechua.com/property/SGLD36080668>

### VALERIE CHUA - HUTTONS ASIA PTE LTD

3 Bishan Place #05-01 CPF Bishan Building  
D20, 579838, Singapore

+65 9272 2788  
WhatsApp Me

val@valeriechua.com

<https://www.valeriechua.com>



Scan QR Code

Huttons®  
The Agency of Choice  
Call for Viewing  
+65-92722788